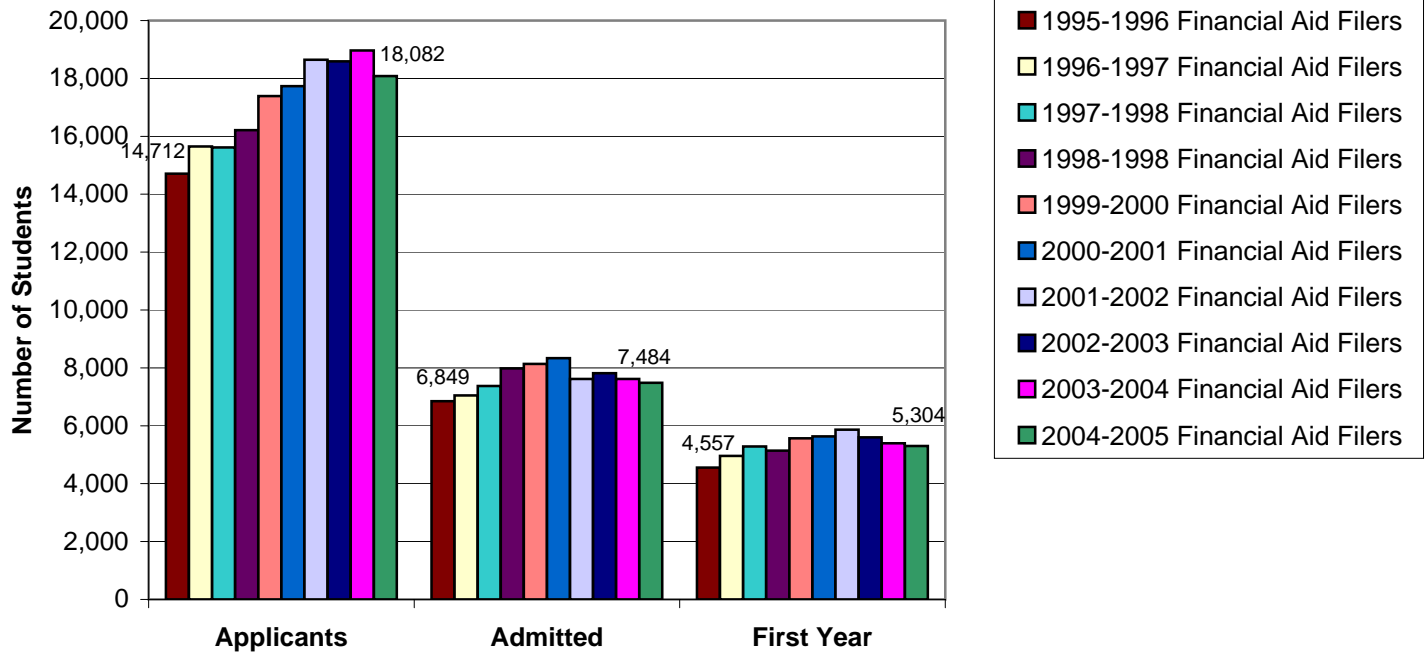


## Economic Diversity of Students at Rutgers: 1995 – 2004

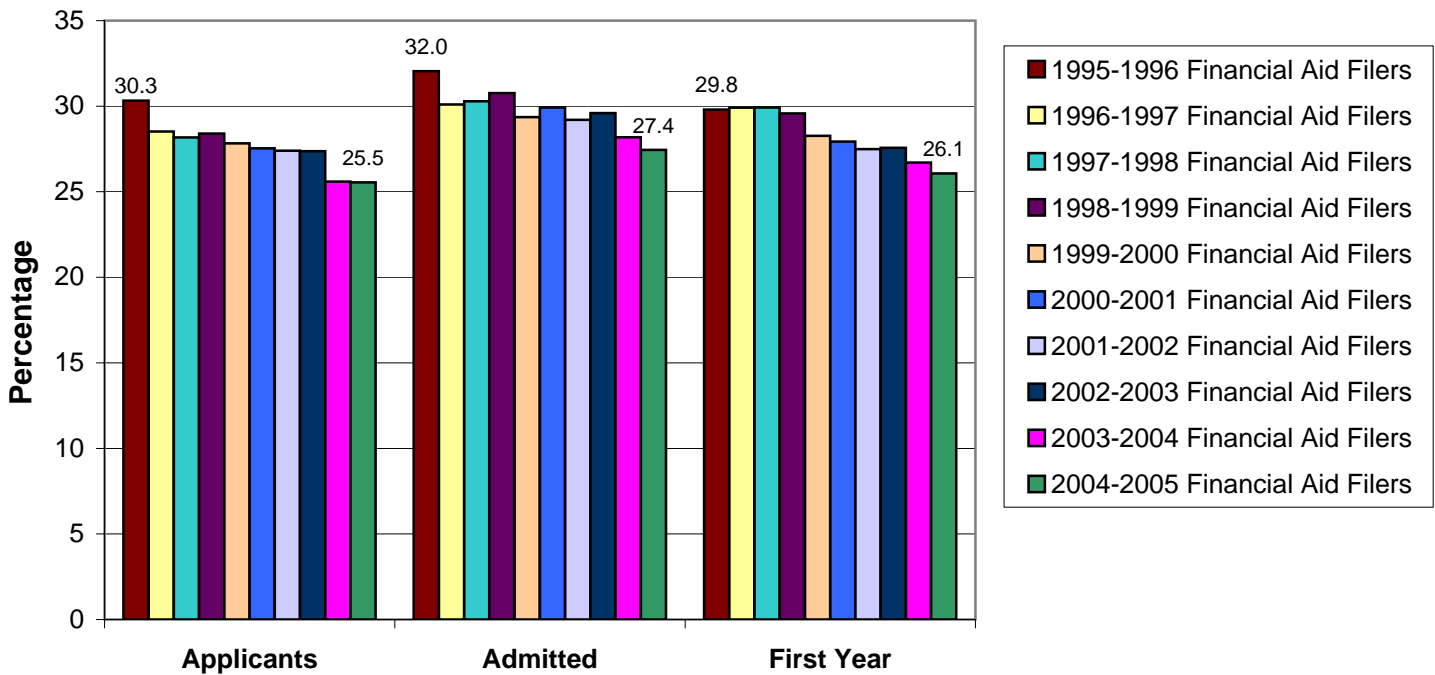
- Over the last ten years, **Rutgers has witnessed an increasing number of students filing for financial aid.** This trend is seen among applicants, admitted students, and first year students. (Figure 1)
- Over that same period, there appears to have been a downward trend in the percentage of RU students who are their family's first generation in college (from 29.8% of first year financial aid filers to 26.1%). The reason for this decrease is not clear, though it may simply reflect a larger societal trend (especially in New Jersey) in which more and more adults are college-educated. (Figure 2)
- While it would be inaccurate to claim that Rutgers has drawn students on a proportionate basis from all income groups, the university has been quite successful over the past decade in maintaining a significant level of commitment to educating individuals from the lower income brackets. In fact, **the percentages of Rutgers' first year students in the lowest 20% and lowest 40% of household income are now slightly higher than they were ten years ago.** (Figure 3, Figure 4, Figure 5, Figure 6, and Table 1)\*
- In the face of rising tuition, increased financial aid offerings at both the state and campus level have proven beneficial in maintaining the share of low-income students at Rutgers. New Jersey's Tuition Aid Grant (TAG) program, for example, has grown 49.6% from \$135.4 million in 1995-96 to \$202.6 million in 2004-05, while the university's own **Rutgers Aid Grant program (RAG) has risen 265% from \$2.3 million in FY96 to \$8.4 million in FY05.** The state's longstanding Educational Opportunity Fund program, meanwhile, appears to have also been a contributing factor in ensuring the continued economic diversity of the Rutgers student body.
- The overall distribution of income for all enrolled students who filed for financial aid during the last ten years has expanded moderately, especially in the middle 50 percent of the income range, while the university has sustained its commitment to the lower end of the economic spectrum. The range in income of the bottom quartile of students enrolling at Rutgers has remained rather flat over the years, with only the slightest increase in the income level since '95. (Figure 7)

\* *Note: it is presumed that, for Figures 5 and 6 and Table 1, students not filing for financial aid are not from the lowest 20% or 40% in household income. This may result in an underestimation of the percentage of low-income students enrolled at Rutgers.*

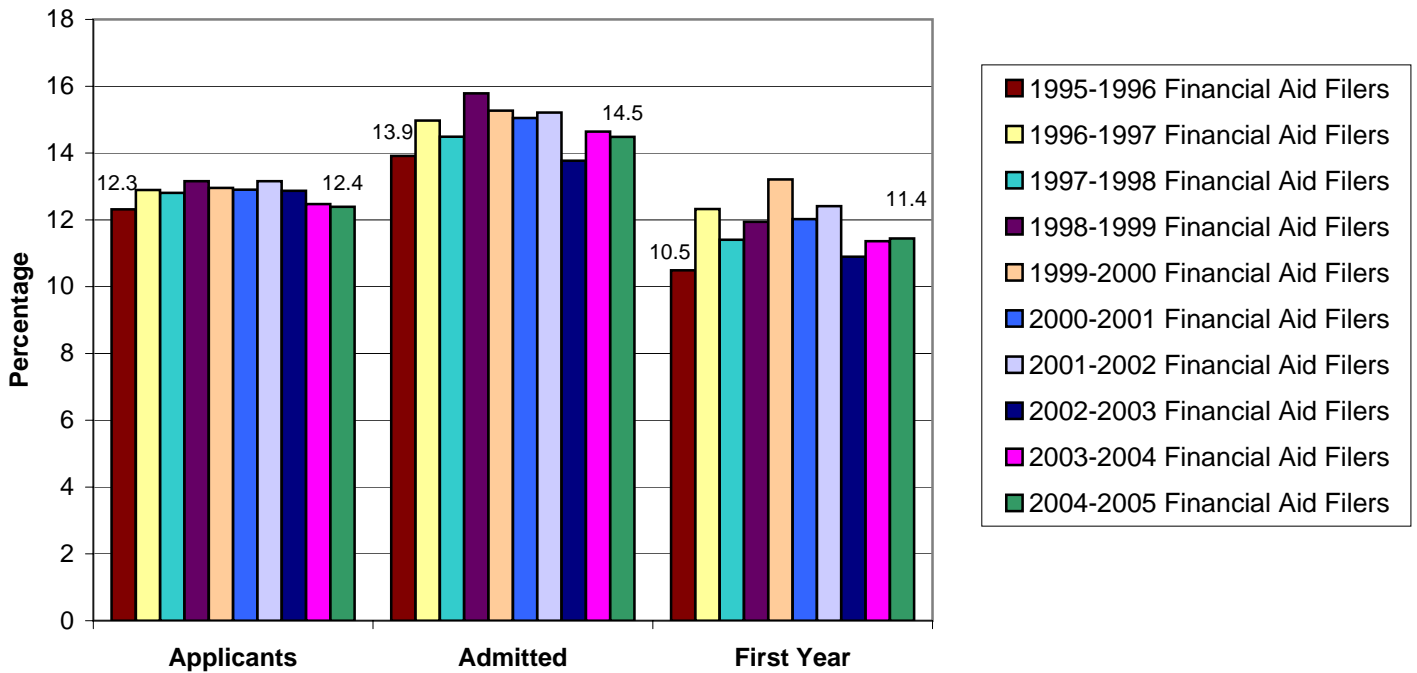
**Figure 1**  
**Number of Applicants, Admitted Students and First Year Students**  
**Who Filed For Financial Aid**  
**1995 through 2004**



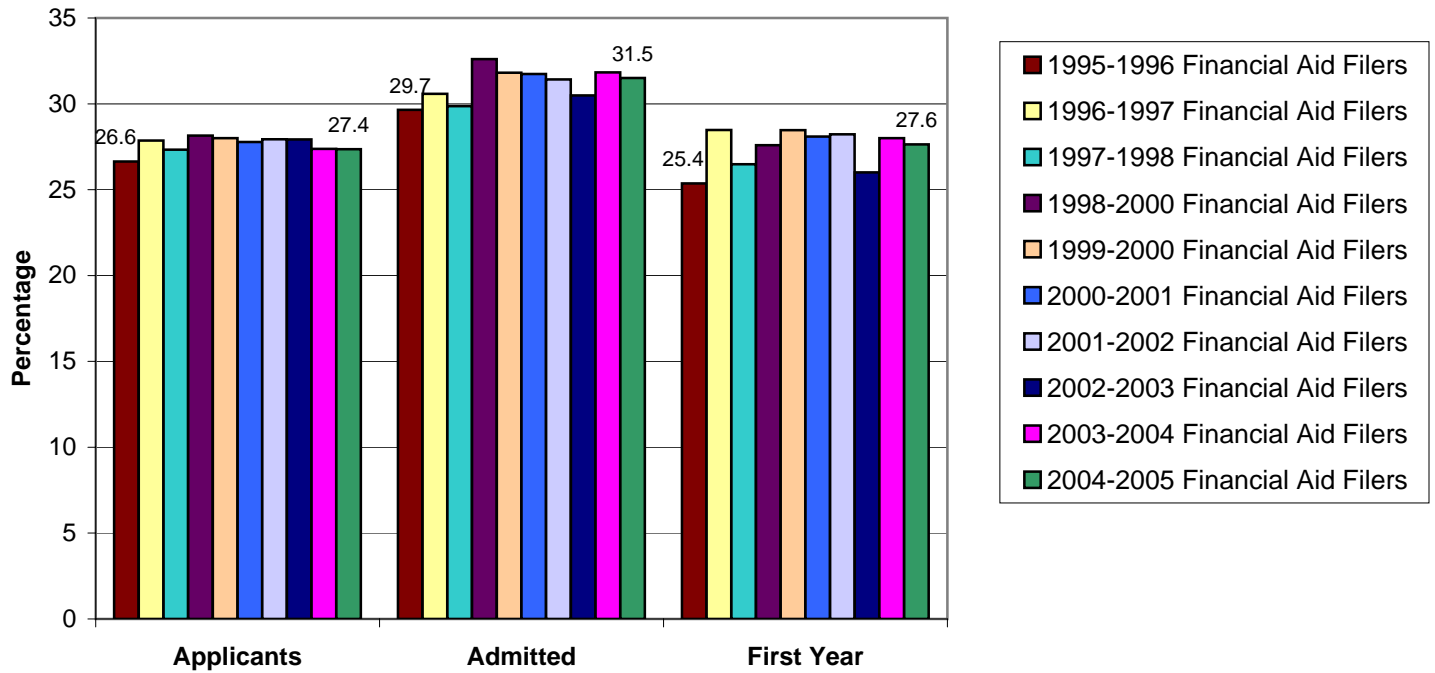
**Figure 2**  
**Percentage of Applicants, Admitted Students and First Year Students**  
**Who are First Generation College Students**  
**1995 through 2004**



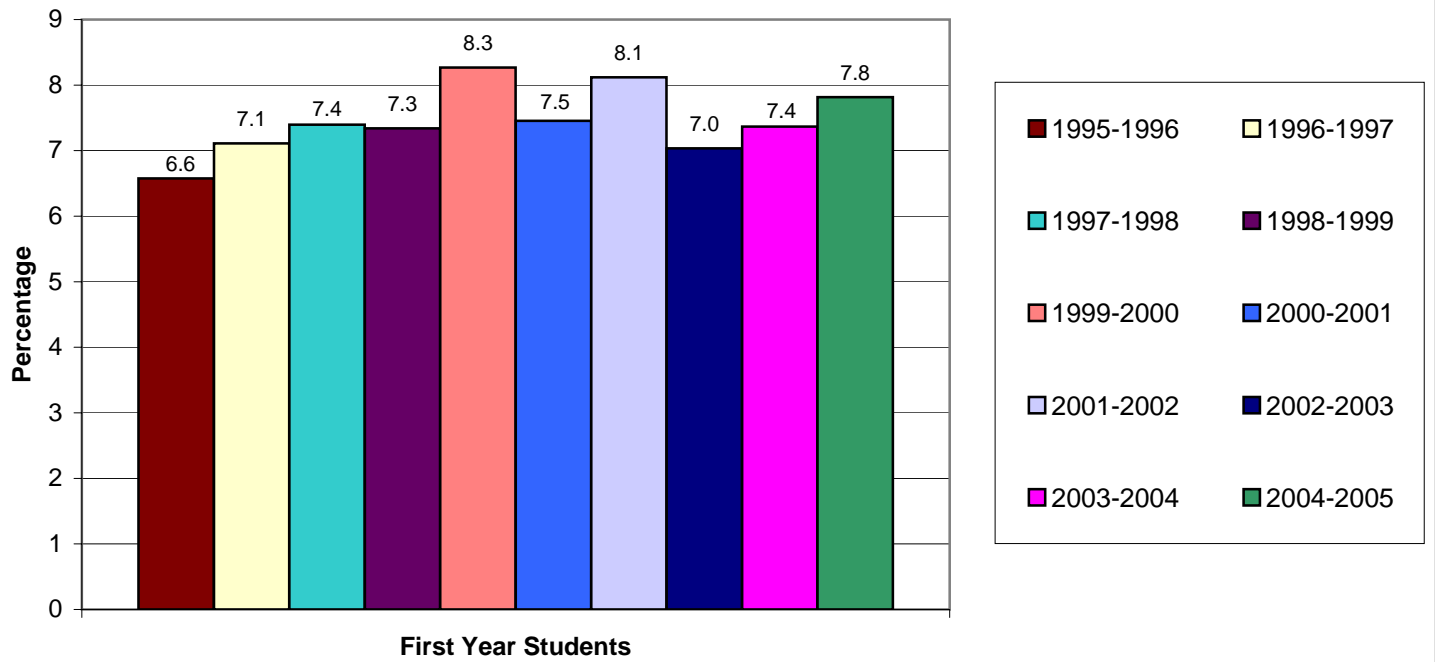
**Figure 3**  
**Percentage of Applicants, Admitted Students and First Year Students in**  
**Lowest 20 Percent of the National Distribution of Household Income**  
**1995 through 2004**



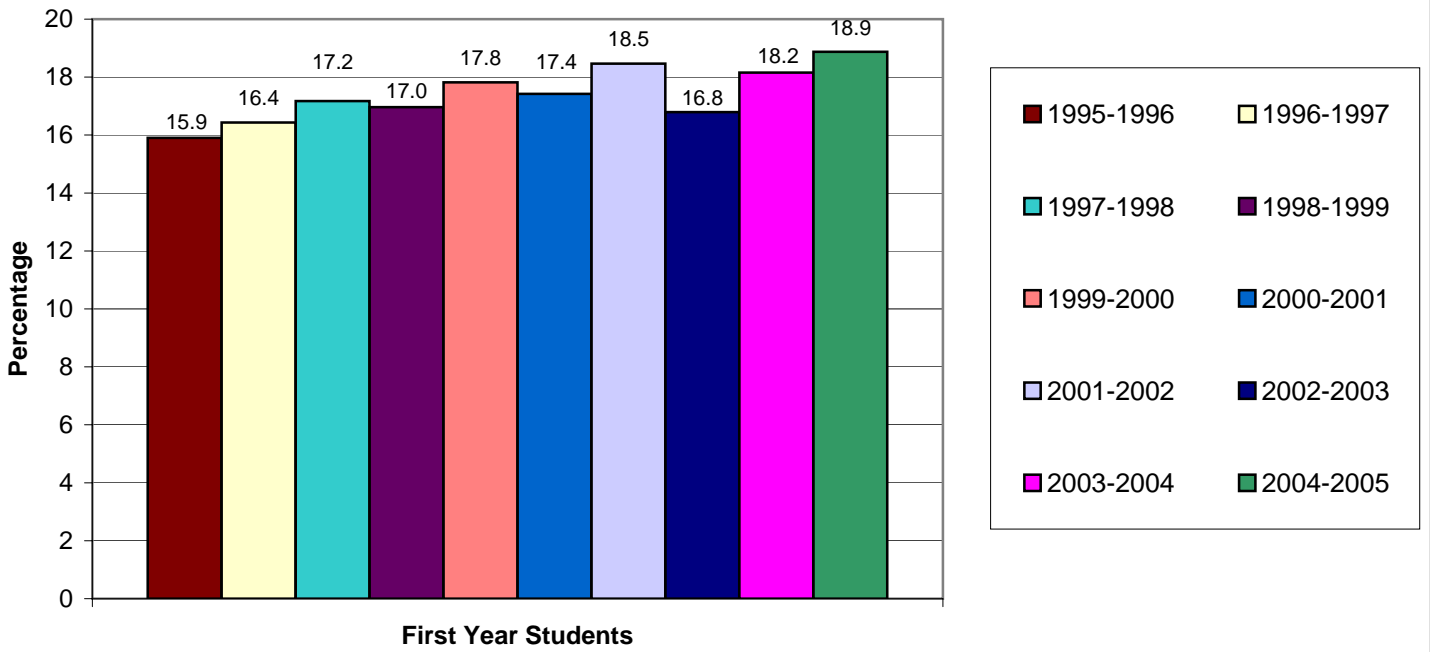
**Figure 4**  
**Percentage of Applicants, Admitted Students and First Year Students in**  
**Lowest 40 Percent of the National Distribution of Household Income**  
**1995 through 2004**



**Figure 5**  
**Percentage of All Rutgers First Year Students in**  
**Lowest 20 Percent of the National Distribution of Household Income**  
**1995 through 2004**



**Figure 6**  
**Percentage of All Rutgers Incoming Students in**  
**Lowest 40 Percent of the National Distribution of Household Income**  
**1995 through 2004**

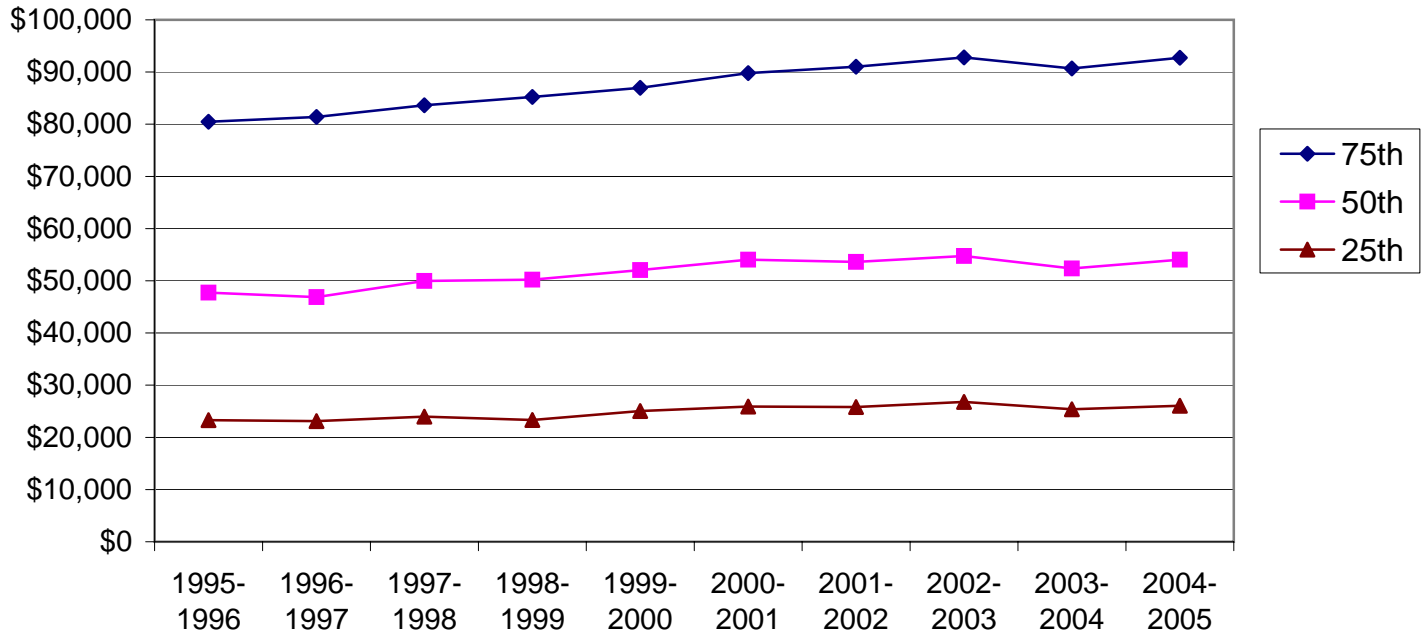


**Table 1**  
**Percentage of First Year Students in**  
**Lowest 20 Percent of the National Distribution of Household Income**  
**From 1995 to 2004**

	<b>Fall</b>	<b>Enrolled</b>	<b>FAFSA Filers</b>	<b>Percent Filers</b>	<b>Lower 20% Income</b>	<b>Percent Lower Income of FAFSA Filers</b>	<b>Percent Lower Income of All First Year</b>
<b>1995</b>		7,269	4,557	62.7%	478	10.5%	6.6%
<b>2004</b>		7,767	5,304	68.3%	607	11.4%	7.8%
<b>Difference</b>		498	747		129		
<b>Percent Change</b>		6.9%	16.4%		27.0%		



**Figure 7**  
**Percent Quartiles of Income\* for All Enrolled Students**  
**Who Filed for Financial Aid**  
**1995 to 2004**



\* Based on 2003 constant dollars