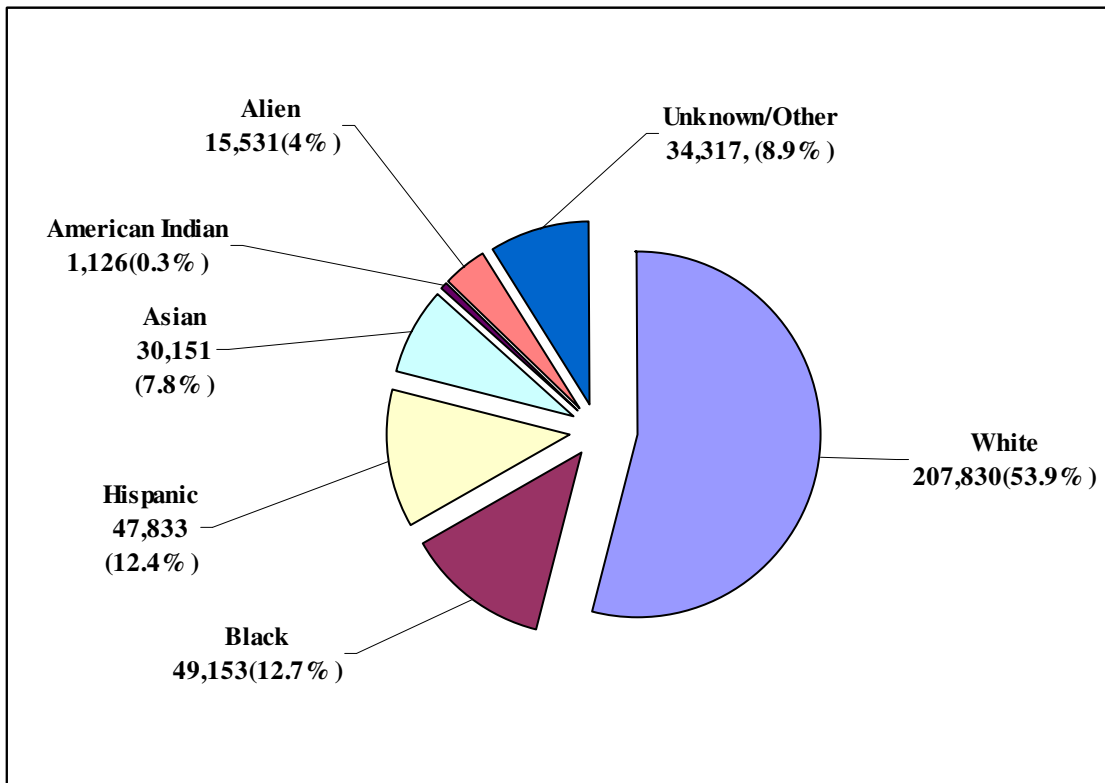


Overview of the System

**Total Undergraduate and Graduate Enrollment
By Sector - NJ Colleges and Universities, Fall 2006**

	Undergraduate	Graduate	Total
Public Research Universities	43,114	20,532	63,646
State Colleges & Universities	76,546	14,097	90,643
Community Colleges	154,398	-	154,398
Public Mission Independents	38,519	18,498	65,508
Proprietary Institutions	5,568	-	5,568
Religious Institutions	2,579	3,599	6,178
NJ Total	326,627	59,314	385,941

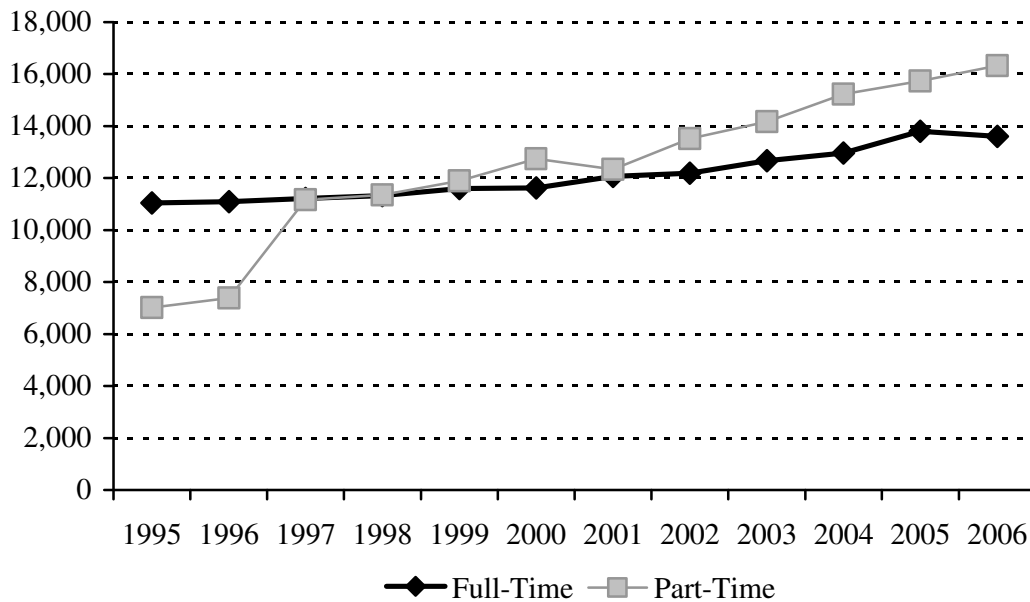
**Race/Ethnicity Distribution
All Students, Fall 2006**



Faculty Employed at NJ Institutions by Sector, Fall 2006

	Full-Time		Part-Time		TOTAL
	#	%	#	%	
Public Research Universities	4,968	65.5%	2,616	34.5%	7,584
State Colleges & Universities	2,678	40.9%	3,866	59.1%	6,544
Community Colleges	2,222	26.1%	6,304	73.9%	8,526
Public Mission Independents	3,479	52.8%	3,112	47.2%	6,591
Proprietary Institutions	145	28.2%	370	71.8%	515
Religious Institutions	110	67.5%	53	32.6%	163
NJ Total	13,602	45.5%	16,321	54.5%	29,923

NJ College & University Faculty, 1995-2006

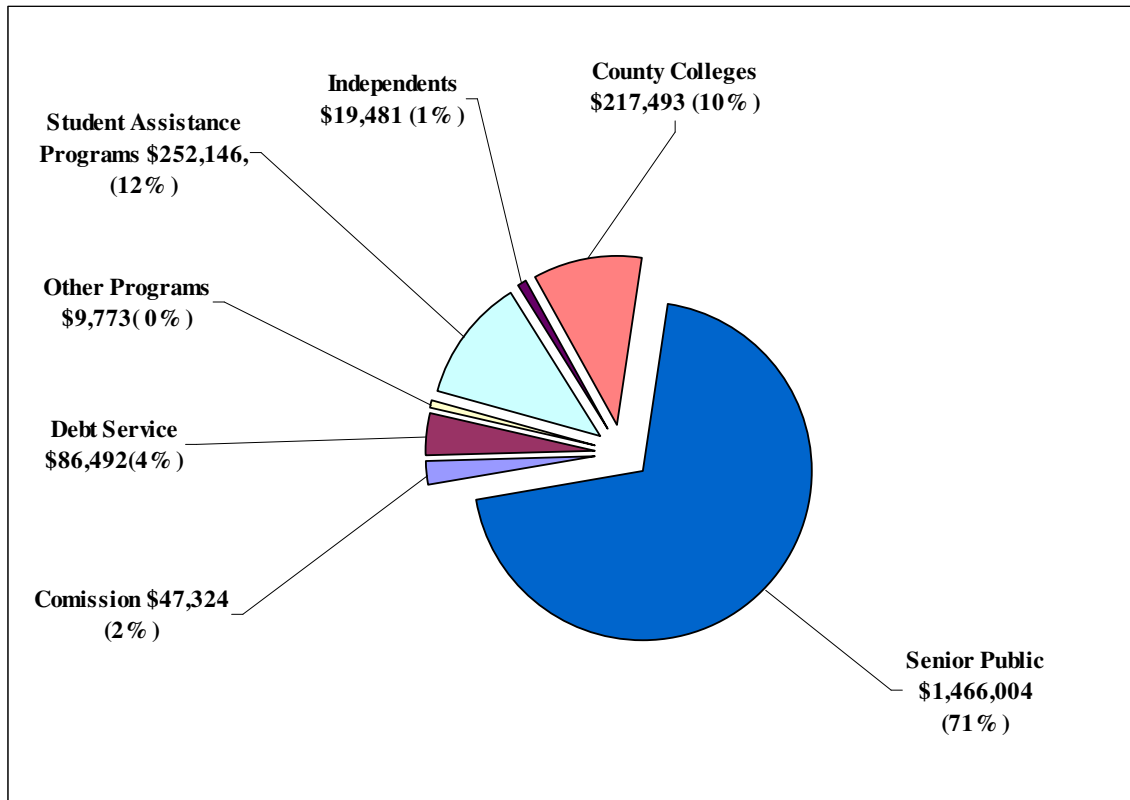


A Blueprint for Excellence: 2007 Progress Report and Call to Action

Degrees and Certificates Awarded by New Jersey Colleges and Universities, 2006

	Cert.	Assoc.	Bach.	Mast.	Doct.	1st Prof.	Total
Public Research Universities	38	148	9,085	3,720	657	1,130	14,778
State Colleges & Universities	5	271	14,707	3,312	10	-	18,305
Community Colleges	744	13,513	-	-	-	-	14,257
Public Mission Independents	109	131	8,224	5,411	510	441	14,826
Proprietary Institutions	56	1,251	487	-	-	-	1,794
Religious Institutions	0	32	363	575	26	149	1,145
NJ Total	952	15,346	32,866	13,018	1,203	1,720	65,105

Higher Education Budget, Fiscal 2007 (\$000)



A Blueprint for Excellence: 2007 Progress Report and Call to Action

Institution-Specific Outcomes

Introduction

Using the Integrated Postsecondary Education Data System (IPEDS) and other national sources, the annual updates of the plan provide outcome data on seven institution-specific components that are directly related to key state goals of enhancing student access, improving student outcomes, and increasing external funding. Baseline data for those components are provided, along with peer group comparisons where data are available.

Institutions or sectors have identified peers that provide a national comparative context to assist in assessing progress in meeting the objectives of the *Blueprint*. In the case of the community colleges and the independent colleges and universities, **sector peer comparisons are provided for each of these sectors as a whole, comparing aggregate outcomes for each sector with the aggregate outcomes of its respective national sector.**

Each of the public research universities, nine state colleges and universities, and proprietary institutions individually identified a group of similar peer institutions for comparative purposes.* In those cases, **institutional peer comparisons are provided for each of these institutions, comparing the institution's outcomes with the average of the outcomes of its respective peers.** The number of institutions in each peer group and the variability among the peer institutions differs. In addition, some institutions chose to include both peer and aspirant institutions in their comparative groups, which provides a broader and more challenging comparison level.

In reviewing progress made since the plan was adopted in late 2003, it is important to recognize that changes are best assessed by examining trend data over several years, giving time for institutional initiatives to be reflected. As noted in the plan, external circumstances and funding levels will also significantly influence the degree to which some institutional goals can be met.

*Due to their unique missions, Thomas Edison State College and the University of Medicine and Dentistry of New Jersey are not included in most of the comparative data, although they have identified specific goals on which to focus primary efforts.

A Blueprint for Excellence: 2007 Progress Report and Call to Action

STUDENTS SERVED

The number of students served by an institution represents the total headcount of all students enrolled in credit bearing or remedial/ESL courses at that institution for the fall semester.

The following enrollment data provide a comparative context over five years for each of the public research universities, state colleges and universities, and proprietary institutions and for the community college and the independent sectors.

Public Research Universities

	Fall 02	Fall 03	Fall 04	Fall 05	Fall 06		Fall 02	Fall 03	Fall 04	Fall 05	Fall 06
NJIT	8,828	8,770	8,249	8,058	8,209	Rutgers	51,480	51,268	50,552	50,016	49,760

	Fall 02	Fall 03	Fall 04	Fall 05	Fall 06
UMDNJ	4,680	4,942	5,329	5,574	5,677

State Colleges/Universities

	Fall 02	Fall 03	Fall 04	Fall 05	Fall 06		Fall 02	Fall 03	Fall 04	Fall 05	Fall 06
Kean	12,779	12,978	12,897	12,958	13,050	Montclair	14,673	15,204	15,637	16,063	16,076

	Fall 02	Fall 03	Fall 04	Fall 05	Fall 06		Fall 02	Fall 03	Fall 04	Fall 05	Fall 06
NJCU	9,097	9,361	8,799	8,464	8,522	Ramapo	5,494	5,631	5,617	5,538	5,499

	Fall 02	Fall 03	Fall 04	Fall 05	Fall 06		Fall 02	Fall 03	Fall 04	Fall 05	Fall 06
Rowan	9,685	9,667	9,688	9,762	9,578	Stockton	6,538	6,881	7,002	7,035	7,212

	Fall 02	Fall 03	Fall 04	Fall 05	Fall 06		Fall 02	Fall 03	Fall 04	Fall 05	Fall 06
TCNJ	6,948	6,911	6,812	6,768	6,934	T Edison	9,225	10,233	11,000	11,224	13,173

	Fall 02	Fall 03	Fall 04	Fall 05	Fall 06
Wm. Pat.	10,924	11,210	11,409	10,970	10,599

Proprietary Independents

	Fall 02	Fall 03	Fall 04	Fall 05	Fall 06		Fall 02	Fall 03	Fall 04	Fall 05	Fall 06
Berkeley	2,199	2,200	2,313	2,422	2,729	DeVry	3,268	2,547	2,007	1,504	1,417

	Fall 02	Fall 03	Fall 04	Fall 05	Fall 06		Fall 02	Fall 03	Fall 04	Fall 05	Fall 06
Gibbs	1,512	1,651	1,462	1,102	991	Phoenix	0	0	188	383	431

Community Colleges

	Fall 02	Fall 03	Fall 04	Fall 05	Fall 06
NJ	138,924	145,850	151,058	151,885	154,085

Public Mission Independents

	Fall 02	Fall 03	Fall 04	Fall 05	Fall 06
NJ	60,315	61,823	63,563	64,019	65,508

A Blueprint for Excellence: 2007 Progress Report and Call to Action

STUDENT RETENTION RATES

Student retention rate is defined as the third semester retention rate (fall to fall) for first-time full-time degree-seeking freshmen. It should be noted that this rate will fluctuate somewhat with individual cohorts of students, and it will take time for institutional initiatives to be reflected.

The following retention data provide a comparative national context over three years for each of the public research universities, state colleges and universities, and proprietary institutions and for the community college and independent sectors.

Each of the senior public and proprietary institutions is compared below against itself and against a group of institutionally identified peer institutions, which have similar missions and student composition.

Public Research Universities

	2002-03	2003-04	2004-05		2002-03	2003-04	2004-05
NJIT	79%	79%	82%	Rutgers	87%	87%	89%
Peers	74%	78%	78%	Peers	83%	83%	83%

State Colleges/Universities

	2002-03	2003-04	2004-05		2002-03	2003-04	2004-05		2002-03	2003-04	2004-05
Kean	75%	75%	77%	Montclair	82%	84%	82%	NJCU	69%	76%	74%
Peers	78%	77%	77%	Peers	71%	72%	72%	Peers	72%	71%	72%
	2002-03	2003-04	2004-05		2002-03	2003-04	2004-05		2002-03	2003-04	2004-05
Stockton	83%	83%	84%	Ramapo	87%	89%	89%	Rowan	85%	86%	87%
Peers	83%	83%	83%	Peers	77%	73%	73%	Peers	85%	85%	84%
	2002-03	2003-04	2004-05		2002-03	2003-04	2004-05		2002-03	2003-04	2004-05
TCNJ	95%	96%	95%	Wm. Pat.	75%	78%	76%				
Peers	86%	88%	87%	Peers	75%	76%	75%				

Proprietary Independents*

	2002-03	2003-04	2004-05		2002-03	2003-04	2004-05		2002-03	2003-04	2004-05
Berkeley	59%	59%	55%	DeVry	47%	49%	45%	Gibbs	62%	62%	52%
Peers	62%	59%	60%	Peers	62%	61%	57%	Peers	56%	53%	45%

The average rates for New Jersey's community college sector are compared below to the national average for community colleges. Independents are compared to the national average for independent institutions.

Community Colleges

	2002-03	2003-04	2004-05
NJ	62%	61%	60%
US	57%	57%	56%

Public Mission Independents

	2002-03	2003-04	2004-05
NJ	78%	77%	78%
US	77%	76%	76%

A Blueprint for Excellence: 2007 Progress Report and Call to Action

UNDERGRADUATE GRADUATION RATES

Graduation rates are for first-time full-time degree-seeking freshmen, as reported in the IPEDS:Graduation Rate Survey. It should be noted that these rates will fluctuate somewhat with individual cohorts of students, and it will take time for institutional initiatives to be reflected.

The following graduation rate data provide a comparative national context over three years for each of the public research universities, state colleges and universities, and proprietary institutions and for the community college and independent sectors.

Each of the senior public and proprietary institutions is compared below against itself and against a group of institutionally identified peer institutions, which have similar missions and student composition.

Public Research Universities

	fall 1997 cohort		fall 1998 cohort		fall 1999 cohort			fall 1997 cohort		fall 1998 cohort		fall 1999 cohort	
	4-Year	6-Year	4-Year	6-Year	4-Year	6-Year		4-Year	6-Year	4-Year	6-Year	4-Year	6-Year
NJIT	15%	49%	17%	53%	18%	54%	Rutgers	40%	69%	40%	69%	39%	69%
Peers	19%	50%	20%	51%	23%	56%	Peers	32%	60%	32%	61%	36%	65%

State Colleges/Universities

	fall 1997 cohort		fall 1998 cohort		fall 1999 cohort			fall 1997 cohort		fall 1998 cohort		fall 1999 cohort	
	4-Year	6-Year	4-Year	6-Year	4-Year	6-Year		4-Year	6-Year	4-Year	6-Year	4-Year	6-Year
Kean	15%	47%	14%	45%	16%	45%	Montclair	20%	56%	23%	57%	23%	58%
Peers	14%	40%	15%	40%	17%	42%	Peers	18%	42%	19%	42%	20%	46%

	fall 1997 cohort		fall 1998 cohort		fall 1999 cohort	
	4-Year	6-Year	4-Year	6-Year	4-Year	6-Year
NJCU	7%	37%	7%	37%	9%	38%
Peers	8%	33%	8%	34%	12%	35%

	fall 1997 cohort		fall 1998 cohort		fall 1999 cohort	
	4-Year	6-Year	4-Year	6-Year	4-Year	6-Year
Stockton	40%	65%	43%	64%	36%	62%
Peers	32%	58%	34%	59%	37%	61%

	fall 1997 cohort		fall 1998 cohort		fall 1999 cohort	
	4-Year	6-Year	4-Year	6-Year	4-Year	6-Year
Ramapo	28%	52%	36%	62%	38%	57%
Peers	23%	37%	30%	42%	28%	47%

	fall 1997 cohort		fall 1998 cohort		fall 1999 cohort	
	4-Year	6-Year	4-Year	6-Year	4-Year	6-Year
Rowan	31%	60%	37%	63%	39%	62%
Peers	46%	67%	47%	67%	45%	67%

	fall 1997 cohort		fall 1998 cohort		fall 1999 cohort	
	4-Year	6-Year	4-Year	6-Year	4-Year	6-Year
TCNJ	62%	82%	63%	81%	65%	83%
Peers	52%	71%	52%	72%	53%	73%

	fall 1997 cohort		fall 1998 cohort		fall 1999 cohort	
	4-Year	6-Year	4-Year	6-Year	4-Year	6-Year
Wm. Pat.	15%	48%	13%	48%	16%	48%
Peers	20%	47%	21%	46%	22%	47%

Proprietary Independents

	fall 1997 cohort		fall 1998 cohort		fall 1999 cohort	
	150% of normal time	150% of normal time	150% of normal time	150% of normal time	150% of normal time	150% of normal time
Berkeley	50%		50%		47%	
Peers	39%		50%		40%	

	fall 1997 cohort		fall 1998 cohort		fall 1999 cohort	
	150% of normal time	150% of normal time	150% of normal time	150% of normal time	150% of normal time	150% of normal time
DeVry	39%		41%		37%	
Peers	39%		37%		38%	

	fall 1997 cohort		fall 1998 cohort		fall 1999 cohort	
	4-Year	6-Year	4-Year	6-Year	4-Year	6-Year
Gibbs	80%		57%		20%	
Peers	39%		40%		41%	

The average rates for New Jersey's community college sector are compared below to the national average for community colleges. Independents are compared to the national average for independent institutions.

Community Colleges

	fall 2000 cohort		fall 2001 cohort		fall 2002 cohort	
	2-Year	3-Year	2-Year	3-Year	2-Year	3-Year
NJ	4%	13%	4%	13%	4%	13%
US	N/A	23%	N/A	23%	N/A	22%

Public Mission Independents

	fall 1997 cohort		fall 1998 cohort		fall 1999 cohort	
	4-Year	6-Year	4-Year	6-Year	4-Year	6-Year
NJ	44%	61%	45%	61%	43%	61%
US	51%	65%	53%	66%	53%	67%

A Blueprint for Excellence: 2007 Progress Report and Call to Action

MINORITY GRADUATION RATES

Graduation rates are for first-time full-time degree-seeking freshmen who are black or Hispanic, as reported in the IPEDS:Graduation Rate Survey. It should be noted that these rates will fluctuate somewhat with individual cohorts of students, and it will take time for institutional initiatives to be reflected.

The following minority graduation rate data provide a comparative national context over three years for each of the public research universities, state colleges and universities, and proprietary institutions and for the community college and independent sectors.

Each of the senior public and proprietary institutions is compared below against itself and against a group of institutionally identified peer institutions, which have similar missions and student composition.

Public Research Universities

	fall 1997 cohort		fall 1998 cohort		fall 1999 cohort			fall 1997 cohort		fall 1998 cohort		fall 1999 cohort	
	4-Year	6-Year	4-Year	6-Year	4-Year	6-Year		4-Year	6-Year	4-Year	6-Year	4-Year	6-Year
NJIT	6%	30%	4%	39%	5%	45%	Rutgers	22%	56%	27%	58%	27%	60%
Peers	12%	45%	14%	41%	17%	50%	Peers	23%	51%	23%	51%	25%	53%

State Colleges/Universities

	fall 1997 cohort		fall 1998 cohort		fall 1999 cohort			fall 1997 cohort		fall 1998 cohort		fall 1999 cohort	
	4-Year	6-Year	4-Year	6-Year	4-Year	6-Year		4-Year	6-Year	4-Year	6-Year	4-Year	6-Year
Kean	16%	43%	11%	39%	16%	40%	Montclair	16%	49%	20%	51%	20%	52%
Peers	10%	34%	11%	34%	11%	35%	Peers	12%	33%	12%	34%	13%	36%

	fall 1997 cohort		fall 1998 cohort		fall 1999 cohort			fall 1997 cohort		fall 1998 cohort		fall 1999 cohort	
	4-Year	6-Year	4-Year	6-Year	4-Year	6-Year		4-Year	6-Year	4-Year	6-Year	4-Year	6-Year
NJCU	4%	30%	3%	29%	6%	34%	Stockton	25%	54%	32%	55%	22%	51%
Peers	7%	30%	7%	32%	10%	32%	Peers	21%	46%	23%	49%	17%	46%

	fall 1997 cohort		fall 1998 cohort		fall 1999 cohort			fall 1997 cohort		fall 1998 cohort		fall 1999 cohort	
	4-Year	6-Year	4-Year	6-Year	4-Year	6-Year		4-Year	6-Year	4-Year	6-Year	4-Year	6-Year
Ramapo	20%	47%	26%	59%	29%	48%	Rowan	19%	44%	23%	52%	23%	54%
Peers	15%	34%	26%	35%	15%	33%	Peers	25%	46%	24%	48%	26%	54%

	fall 1997 cohort		fall 1998 cohort		fall 1999 cohort			fall 1997 cohort		fall 1998 cohort		fall 1999 cohort	
	4-Year	6-Year	4-Year	6-Year	4-Year	6-Year		4-Year	6-Year	4-Year	6-Year	4-Year	6-Year
TCNJ	44%	71%	43%	64%	32%	63%	Wm. Pat.	11%	38%	7%	38%	9%	41%
Peers	40%	59%	44%	64%	37%	62%	Peers	12%	36%	11%	34%	11%	34%

Proprietary Independents

	fall 1997 cohort		fall 1998 cohort		fall 1999 cohort			fall 1997 cohort		fall 1998 cohort		fall 1999 cohort	
	150% of normal time	150% of normal time	150% of normal time	150% of normal time	150% of normal time	150% of normal time		150% of normal time	150% of normal time	150% of normal time	150% of normal time	150% of normal time	150% of normal time
Berkeley	47%		49%		38%		DeVry	32%		34%		30%	
Peers	36%		52%		36%		Peers	36%		26%		35%	

	fall 1997 cohort		fall 1998 cohort		fall 1999 cohort	
	150% of normal time	150% of normal time	150% of normal time	150% of normal time	150% of normal time	150% of normal time
Gibbs	82%		59%		21%	
Peers	33%		32%		25%	

The average rates for New Jersey's community college sector are compared below to the national average for community colleges. Independents are compared to the national average for independent institutions.

Community Colleges

	fall 2000 cohort		fall 2001 cohort		fall 2002 cohort	
	2-Year	3-Year	2-Year	3-Year	2-Year	3-Year
NJ	1%	6%	1%	6%	2%	6%
US	N/A	17%	N/A	16%	N/A	15%

Public Mission Independents

	fall 1997 cohort		fall 1998 cohort		fall 1999 cohort	
	4-Year	6-Year	4-Year	6-Year	4-Year	6-Year
NJ	28%	49%	32%	49%	30%	50%
US	29%	44%	37%	53%	39%	55%

LOW-INCOME GRADUATION RATES

Graduation rates are for first-time full-time degree-seeking freshmen from low-income families. Students are classified as low-income if their TAG New Jersey Eligibility Index score is less than or equal to 2499. It should be noted that these rates will fluctuate somewhat with individual cohorts of students, and it will take time for institutional initiatives to be reflected.

The following low-income graduation rate data provide a comparative context over three years for each of the public research universities and state colleges and universities and for the community college sector.

There is no comparable national data for this indicator, and no data are available for the independent or proprietary institutions.

Public Research Universities

	fall 1997 cohort		fall 1998 cohort		fall 1999 cohort	
	4-Year	6-Year	4-Year	6-Year	4-Year	6-Year
NJIT	13%	46%	17%	54%	19%	48%

	fall 1997 cohort		fall 1998 cohort		fall 1999 cohort	
	4-Year	6-Year	4-Year	6-Year	4-Year	6-Year
Rutgers	25%	61%	28%	62%	27%	65%

State Colleges/Universities

	fall 1997 cohort		fall 1998 cohort		fall 1999 cohort	
	4-Year	6-Year	4-Year	6-Year	4-Year	6-Year
Kean	16%	48%	17%	43%	15%	42%

	fall 1997 cohort		fall 1998 cohort		fall 1999 cohort	
	4-Year	6-Year	4-Year	6-Year	4-Year	6-Year
Montclair	19%	58%	17%	50%	21%	59%

	fall 1997 cohort		fall 1998 cohort		fall 1999 cohort	
	4-Year	6-Year	4-Year	6-Year	4-Year	6-Year
NJCU	5%	34%	7%	42%	8%	34%

	fall 1997 cohort		fall 1998 cohort		fall 1999 cohort	
	4-Year	6-Year	4-Year	6-Year	4-Year	6-Year
Stockton	25%	58%	38%	61%	25%	55%

	fall 1997 cohort		fall 1998 cohort		fall 1999 cohort	
	4-Year	6-Year	4-Year	6-Year	4-Year	6-Year
Ramapo	25%	56%	24%	51%	29%	49%

	fall 1997 cohort		fall 1998 cohort		fall 1999 cohort	
	4-Year	6-Year	4-Year	6-Year	4-Year	6-Year
Rowan	20%	51%	19%	43%	24%	52%

	fall 1997 cohort		fall 1998 cohort		fall 1999 cohort	
	4-Year	6-Year	4-Year	6-Year	4-Year	6-Year
TCNJ	48%	74%	44%	63%	46%	66%

	fall 1997 cohort		fall 1998 cohort		fall 1999 cohort	
	4-Year	6-Year	4-Year	6-Year	4-Year	6-Year
Wm. Pat.	10%	45%	8%	45%	6%	42%

Community Colleges

	fall 2000 cohort		fall 2001 cohort		fall 2002 cohort	
	2-Year	3-Year	2-Year	3-Year	2-Year	3-Year
NJ	2%	9%	2%	8%	2%	8%

A Blueprint for Excellence: 2007 Progress Report and Call to Action

STUDENT TRANSFER RATES

For the community colleges, this is the three-year rate of transfer for first-time full-time degree-seeking freshmen. For baccalaureate institutions, transfer rate represents the percentage of entering first-time (at the institution) degree-seeking, undergraduate students who are transfers. It should be noted that this rate will fluctuate somewhat with individual cohorts of students, and it will take time for institutional initiatives to be reflected.

The following transfer data provide a comparative context over four years for each of the public research universities and state colleges and universities and for the community college and independent sectors. There are no comparable national data for the baccalaureate institutions, and there are no transfer data available for proprietary institutions.

Public Research Universities

	Fall 2003	Fall 2004	Fall 2005	Fall 2006		Fall 2003	Fall 2004	Fall 2005	Fall 2006
NJIT	41%	38%	31%	29%	Rutgers	33%	33%	32%	32%

State Colleges/Universities

	Fall 2003	Fall 2004	Fall 2005	Fall 2006		Fall 2003	Fall 2004	Fall 2005	Fall 2006
Kean	46%	45%	41%	47%	Montclair	43%	40%	36%	37%

	Fall 2003	Fall 2004	Fall 2005	Fall 2006		Fall 2003	Fall 2004	Fall 2005	Fall 2006
NJCU	45%	52%	49%	48%	Ramapo	41%	39%	39%	42%

	Fall 2003	Fall 2004	Fall 2005	Fall 2006		Fall 2003	Fall 2004	Fall 2005	Fall 2006
Rowan	39%	35%	39%	40%	Stockton	50%	51%	52%	62%

	Fall 2003	Fall 2004	Fall 2005	Fall 2006		Fall 2003	Fall 2004	Fall 2005	Fall 2006
TCNJ	14%	16%	17%	20%	Wm. Pat	41%	38%	36%	34%

Public Mission Independents

	Fall 2003	Fall 2004	Fall 2005
NJ	24%	24%	24%

Community Colleges

The average rates for New Jersey's community college sector are compared below to the national average for community colleges.

	fall 1997 cohort 3-Year	fall 1998 cohort 3-Year	fall 1999 cohort 3-Year
NJ	16%	16%	16%
US	16%	16%	16%

A Blueprint for Excellence: 2007 Progress Report and Call to Action

EXTERNAL RESEARCH DOLLARS

External research dollars is defined as the difference between the total academic R&D expenditures and institutionally funded R&D expenditures. It should be noted that the availability of funds for research grants fluctuates from year-to-year. The following data are for all institutions/sectors reporting research expenditures in the NSF R&D expenditures survey.

The following data on external research dollars provide a comparative national context over four years for the senior public institutions and independent sector.

Each of the public research universities and state colleges and universities is compared below against itself and against a group of institutionally identified peer institutions, which have similar missions and student composition.

Public Research Universities

	2002	2003	2004	2005
NJIT	\$45,381,000	\$50,890,000	\$47,117,000	\$47,568,000
Peers	\$55,297,273	\$61,233,000	\$68,626,818	

	2002	2003	2004	2005
Rutgers	\$163,809,000	\$179,320,000	\$201,310,000	\$209,314,000
Peers	\$147,297,882	\$162,354,794	\$170,960,673	

	2002	2003	2004	2005
UMDNJ	\$136,238,000	\$148,945,000	\$170,430,000	\$198,022,000
Peers	\$55,207,417	\$62,338,750	\$55,363,850	

State Colleges/Universities

	2002	2003	2004	2005
Montclair	\$472,000	\$502,000	\$817,000	\$1,148,000
Peers	\$4,548,904	\$4,760,710	\$5,324,458	

	2002	2003	2004	2005
NJCU	\$184,000	\$326,000	\$260,000	\$650,000
Peers	\$6,160,200	\$8,535,200	\$8,587,600	

	2002	2003	2004	2005
Rowan	N/A	\$5,964,000	\$6,094,000	\$4,865,000
Peers	N/A	\$866,000	\$690,250	

	2002	2003	2004	2005
TCNJ	\$1,194,000	\$1,724,000	\$741,000	\$590,000
Peers	\$7,660,000	\$8,874,125	\$8,733,444	

Independents are compared to the national average for independent institutions.

Public Mission Independents

	2002	2003	2004	2005
NJ	\$23,038,333	\$29,619,600	\$26,511,667	\$27,386,000
US	\$44,094,474	\$48,675,461	\$55,214,754	

A Blueprint for Excellence: 2007 Progress Report and Call to Action

EXTERNAL FUNDS

External funds data include federal operating grants and contracts, local/private operating grants and contracts, nonoperating gifts and contributions, and investment income. Financial aid portions of grants and contracts are excluded.

The data below show external funds as a percentage of total revenue. Because periodic, large capital grants are reported on this IPEDS line, there may be significant fluctuations for an institution. To smooth these fluctuations, the data are reported as three-year moving averages. Three-year moving averages of the actual dollar amounts are provided as well.

The following data on external funds provide a comparative context over three years for each of the public research universities, state colleges and universities, and proprietary institutions and for the community college and independent sectors.

Three-Year Moving Average

Public Research Universities

2002-04		2003-05	2002-04		2003-05	2002-04		2003-05
NJIT	24.0%	24.8%	Rutgers	19.5%	19.6%	UMDNJ	15.9%	15.8%
	\$52,269,333	\$54,762,667		\$271,473,333	\$282,915,000		\$234,539,556	\$241,020,110

State Colleges/Universities

2002-04		2003-05	2002-04		2003-05	2002-04		2003-05
Kean	N/A	1.3%	Montclair	4.8%	4.1%	NJCU	4.7%	4.6%
		\$1,979,976		\$8,336,577	\$7,762,827		\$4,808,083	\$5,038,879

2002-04		2003-05	2002-04		2003-05	2002-04		2003-05
Stockton	9.2%	8.1%	Ramapo	4.6%	4.5%	Rowan	12.7%	10.9%
	\$9,075,276	\$8,273,096		\$3,892,333	\$4,034,000		\$19,095,454	\$17,697,038

2002-04		2003-05	2002-04		2003-05	2002-04		2003-05
TCNJ	9.1%	8.8%	Wm. Pat	3.7%	4.4%	Edison	3.1%	2.5%
	\$13,822,000	\$13,740,667		\$5,229,089	\$6,535,148		\$801,236	\$785,307

Proprietary Independents

2002-04		2003-05	2002-04		2003-05	2002-04		2003-05
Berkeley	0.1%	0.1%	DeVry	0.3%	0.0%	Gibbs	18.8%	12.9%
	\$30,046	\$44,322		\$126,296	\$0		\$3,970,411	\$2,872,776

Community Colleges

2002-04		2003-05
NJ	4.4%	4.6%
	\$38,452,602	\$43,954,150

Public Mission Independents

2002-04		2003-05
NJ	48.1%	58.5%
	\$1,096,855,269	\$1,621,842,007