

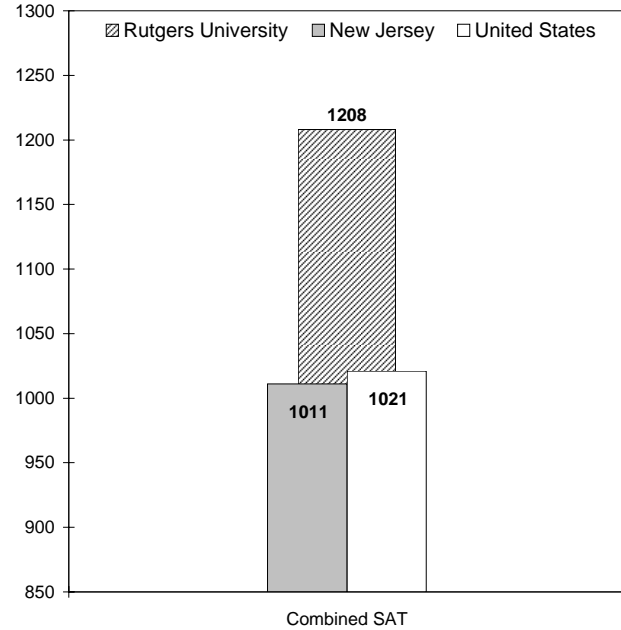
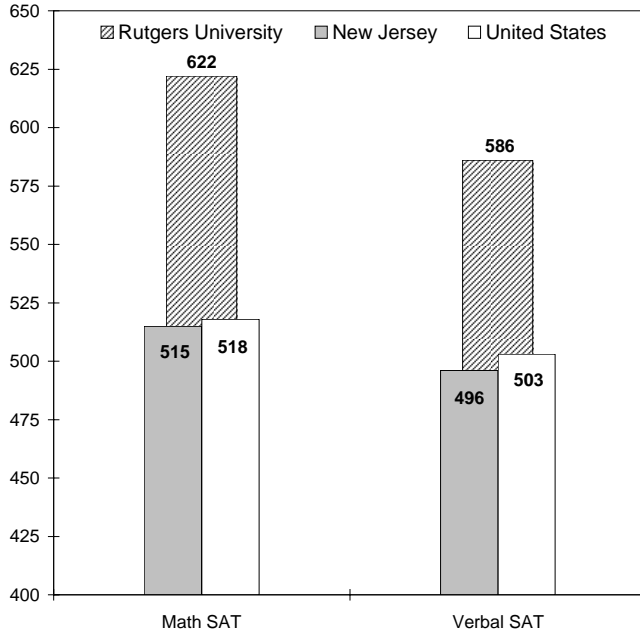
Mean SAT Scores for Registered First-Year, Regular-Admit Enrolled Students

Fall 1997 - 2006

YEAR	MEAN SAT								
	Rutgers University			New Jersey			United States		
	Math	Verbal	Combined	Math	Verbal	Combined	Math	Verbal	Combined
1997	601	580	1181	508	497	1005	511	505	1016
1998	601	578	1179	508	497	1005	512	505	1017
1999	602	578	1180	510	498	1008	511	505	1016
2000	609	580	1189	513	498	1011	514	505	1019
2001	609	582	1191	513	499	1012	514	506	1020
2002	610	578	1188	513	498	1011	516	504	1020
2003	615	588	1203	515	501	1016	519	507	1026
2004	618	591	1209	514	501	1015	518	508	1026
2005	624	593	1217	517	503	1020	520	508	1028
2006	622	586	1208	515	496	1011	518	503	1021

Source: Undergraduate Admissions

Mean SAT Scores*for Registered First-Year, Regular-Admit Enrolled Students
Fall 2006



Mean GRE Scores for First-Year Graduate/Professional Students
Fall 1997 - 2006

YEAR	GRE (Mean)			
	Graduate School - Camden	Graduate School - Newark	Graduate School - New Brunswick	School of Criminal Justice
1997	1036	1059	1214	1025
1998	1032	1046	1203	970
1999	997	1010	1209	1020
2000	1005	1016	1223	820
2001	1000	1008	1209	918
2002	1016	1071	1223	927
2003	1028	1052	1232	898
2004	1043	1052	1234	961
2005	1104	1080	1256	1038
2006	1045	1053	1235	988

Source: Graduate Admissions

Office of Institutional Research

Mean GRE Scores for First-Year Graduate/Professional Students
Fall 1997 - 2006

YEAR	GRE (Mean)		
	Graduate School of Appl. & Prof. Psych.	Graduate School of Education	School of Comm., Info. & Lib. Studies
1997	1160	1050	1102
1998	1235	1059	1076
1999	1178	1051	1087
2000	1238	1044	1098
2001	1142	1045	1069
2002	1205	1040	1132
2003	1201	1059	1161
2004	1203	1061	1125
2005	1176	1056	1152
2006	1225	1081	1204

Source: Graduate Admissions

Office of Institutional Research

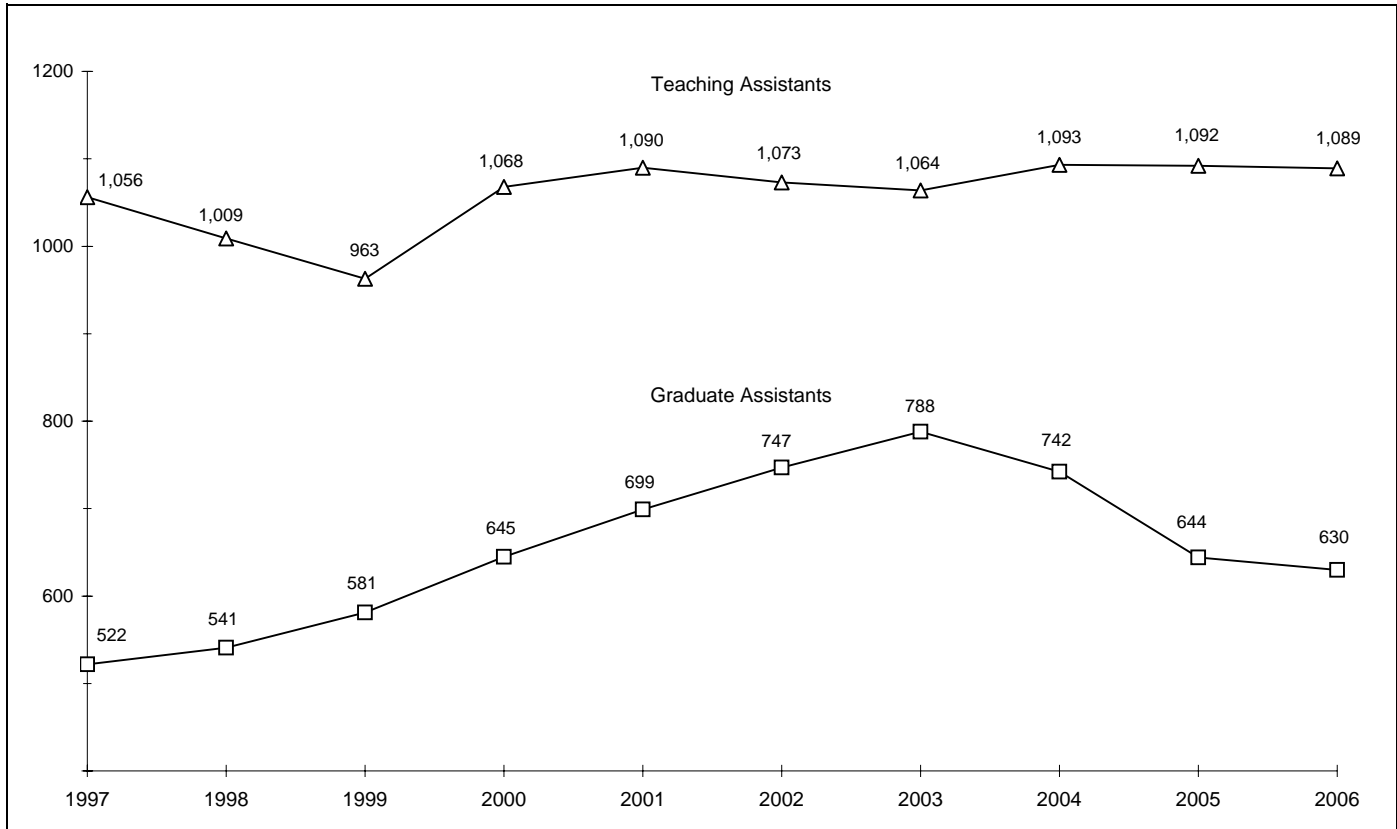
Mean GMAT and LSAT Scores for First-Year Graduate/Professional Students
Fall 1997 - 2006

YEAR	GMAT (Mean)		LSAT (Mean)	
	Rutgers Business Sch.- Newark and New Bruns.	School of Business - Camden	School of Law - Camden	School of Law - Newark
1996	556	538	154	156
1997	559	530	153	155
1998	581	528	153	155
1999	576	543	155	156
2000	572	547	156	155
2001	576	559	156	155
2002	577	545	157	157
2003	589	541	158	158
2004	581	544	158	158
2005	574	558	159	160
2006	576	542	157	157

Source: Graduate Admissions

Office of Institutional Research

Headcount of Teaching and Graduate Assistants Fall 1997 - 2006



Degrees Conferred by Gender and Race/Ethnicity for Camden Campus and Newark Campus

Academic Year 2005/2006

GENDER	CAMDEN				NEWARK			
	Doctoral	First Prof.	Masters	Bachelors	Doctoral	First Prof.	Masters	Bachelors
Female								
RACE/ETHNICITY								
African American	*	9	15	101	0	13	54	197
American Indian	*	0	0	1	0	0	1	0
Asian	*	10	8	49	3	9	65	160
Latino	*	6	4	24	0	9	18	135
White	*	71	62	352	6	51	136	210
Other & No Information	*	10	13	19	11	11	55	78
Total	*	106	102	546	20	93	329	780
Male								
RACE/ETHNICITY								
African American	*	3	11	30	0	11	28	73
American Indian	*	1	0	2	0	1	0	0
Asian	*	10	7	20	10	22	107	140
Latino	*	5	2	15	3	15	38	64
White	*	106	60	276	5	66	188	152
Other & No Information	*	17	13	16	5	7	58	40
Total	*	142	93	359	23	122	419	469
Total								
RACE/ETHNICITY								
African American	*	12	26	131	0	24	82	270
American Indian	*	1	0	3	0	1	1	0
Asian	*	20	15	69	13	31	172	300
Latino	*	11	6	39	3	24	56	199
White	*	177	122	628	11	117	324	362
Other & No Information	*	27	26	35	16	18	113	118
Total	*	248	195	905	43	215	748	1249

* Doctoral degrees not offered in Camden.

Source: IPEDS Completions Report

Degrees Conferred by Gender and Race/Ethnicity for New Brunswick Campus and Total University
Academic Year 2005/2006

GENDER	NEW BRUNSWICK				TOTAL UNIVERSITY			
	Doctoral	First Prof.	Masters	Bachelors	Doctoral	First Prof.	Masters	Bachelors
Female								
RACE/ETHNICITY								
African American	9	5	91	307	9	27	160	605
American Indian	0	0	0	7	0	0	1	8
Asian	37	60	60	615	40	79	133	824
Latino	9	3	3	265	9	18	25	424
White	92	26	26	1,696	98	148	224	2,258
Other & No Information	40	9	9	139	51	30	77	236
Total	187	103	189	3,029	207	302	620	4,355
Male								
RACE/ETHNICITY								
African American	3	6	23	155	3	20	62	258
American Indian	0	0	1	10	0	2	1	12
Asian	54	27	94	597	64	59	208	757
Latino	10	2	17	164	13	22	57	243
White	84	23	231	1,676	89	195	479	2,104
Other & No Information	53	5	69	119	58	29	140	175
Total	204	63	435	2,721	227	327	947	3,549
Total								
RACE/ETHNICITY								
African American	12	11	114	462	12	47	222	863
American Indian	0	0	3	17	0	2	4	20
Asian	91	87	237	1,212	104	138	424	1,581
Latino	19	5	85	429	22	40	147	667
White	176	49	848	3,372	187	343	1,294	4,362
Other & No Information	93	14	200	258	109	59	339	411
Total	391	166	1,487	5,750	434	629	2,430	7,904

Percent Degrees Conferred by Gender and Race/Ethnicity for Total University

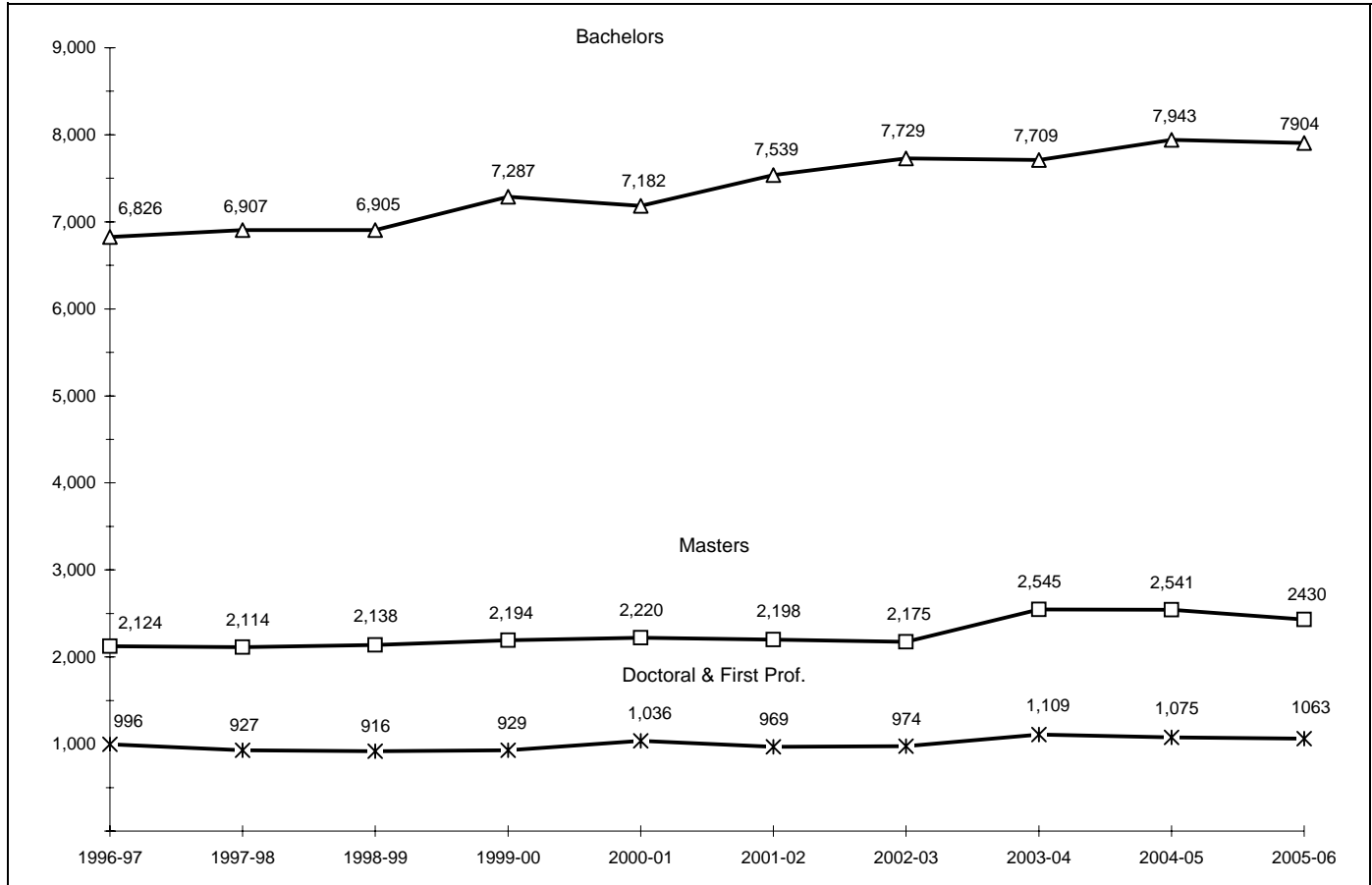
Academic Year 2005/2006

GENDER	TOTAL UNIVERSITY			
	Doctoral	First Prof.	Masters	Bachelors
	%	%	%	%
Female				
RACE/ETHNICITY				
African American	4.3	8.9	25.8	13.9
American Indian	0.0	0.0	0.2	0.2
Asian	19.3	26.2	21.5	18.9
Latino	4.3	6.0	4.0	9.7
White	47.3	49.0	36.1	51.8
Other & No Information	24.6	9.9	12.4	5.4
Total	100	100	100	100
Total Female	47.7	48.0	25.5	55.1
Male				
RACE/ETHNICITY				
African American	1.3	6.1	6.5	7.3
American Indian	0.0	0.6	0.1	0.3
Asian	28.2	18.0	22.0	21.3
Latino	5.7	6.7	6.0	6.8
White	39.2	59.6	50.6	59.3
Other & No Information	25.6	8.9	14.8	4.9
Total	100	100	100	100
Total Male	52.3	52.0	39.0	44.9
Total				
RACE/ETHNICITY				
African American	2.8	7.5	9.1	10.9
American Indian	0.0	0.3	0.2	0.3
Asian	24.0	21.9	17.4	20.0
Latino	5.1	6.4	6.0	8.4
White	43.1	54.5	53.3	55.2
Other & No Information	25.1	9.4	14.0	5.2
Total	100	100	100	100

Source: IPEDS Completions Report

Office of Institutional Research

Degrees Conferred for Total University Academic Year 1996/1997- 2005/2006



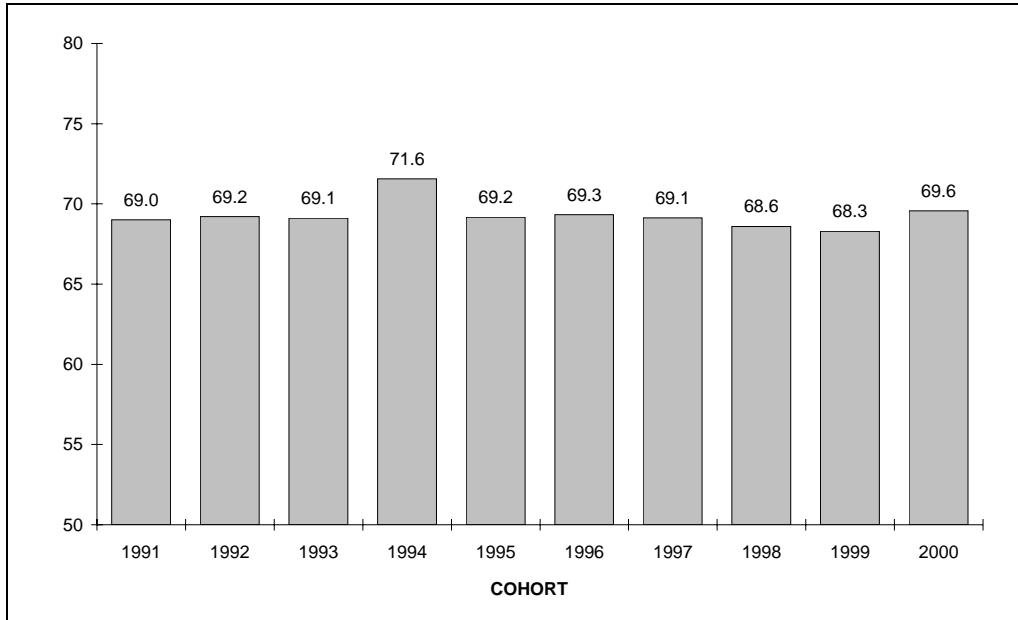
Degrees by Program for Total University
Academic Year 2005/2006

PROGRAM	DOCTORAL/ PROFESSIONAL	MASTERS	BACHELORS	TOTAL
Agriculture, Agriculture Operations and Related Sciences	13	18	95	126
Area/Ethnic and Cultural Studies	0	10	121	131
Biological Sciences	44	50	634	728
Business Management and Administrative Services	11	701	1109	1,821
Communications	0	0	554	554
Computer and Information Sciences	11	44	265	320
Conservation and Renewable Natural Resources	12	12	82	106
Education	22	295	155	472
Engineering	55	122	509	686
English Language and Literature/Letters	13	61	366	440
Environmental Planning and Design	0	0	32	32
Foreign Languages and Literatures	24	44	136	204
Health Professions	178	90	220	488
History	10	31	336	377
Interdisciplinary	4	6	61	71
Law	463	0	0	463
Liberal Arts	0	18	26	44
Library Science	16	160	0	176
Mathematics	14	46	111	171
Philosophy/Religion	5	0	105	110
Physical Sciences	43	34	101	178
Protective Services	5	35	427	467
Psychology	43	62	767	872
Public Administration	9	398	72	479
Social/Political/Historical Studies	44	69	1,300	1,413
Urban Planning and Policy Development	6	35	0	41
Visual/Performing Arts	18	89	320	427
TOTAL	1,063	2,430	7,904	11,397

Source: IPEDS Completions Report

Office of Institutional Research

Six-Year Graduation Rates*
First-Year Undergraduate Students, Fall Cohorts 1991 - 2000



* Graduations through October.

Source: IPEDS Completions Report

Office of Institutional Research

**Ph.D. Recipients Who Had Received Undergraduate Degrees
From Rutgers University by Broad Area of Doctorate**

Years 1993 - 2005

BROAD ACADEMIC AREA OF DOCTORATE	1993		1998		2003		2005	
	Number of Degrees	%	Number of Degrees	%	Number of Degrees	%	Number of Degrees	%
Education	25	14.0	28	15.1	24	11.4	23	12.2
Engineering	18	10.1	26	14.0	25	11.8	21	11.2
Geosciences	7	3.9	8	4.3	5	2.4	4	2.1
Humanities	19	10.6	17	9.1	17	8.1	17	9.0
Life Sciences	52	29.1	50	26.9	52	24.6	54	28.7
Math and Computer Sciences	5	2.8	4	2.2	10	4.7	2	1.1
Physical Sciences	14	7.8	10	5.4	13	6.2	5	2.7
Professional or Other Fields	12	6.7	5	2.7	21	10.0	15	8.0
Psychology	19	10.6	22	11.8	23	10.9	22	11.7
Social Sciences	8	4.5	16	8.6	21	10.0	25	13.3
Total Doctorates	179	100	186	100	211	100	188	100

Source: Survey of Earned Doctorates, National Science Foundation

Office of Institutional Research

**Science and Engineering Postdoctorates
By Academic Discipline**

Fall 1989 - 2004

ACADEMIC DISCIPLINE	1989		1994		1999		2004	
	Number	%	Number	%	Number	%	Number	%
Engineering	28	16.7	39	17.8	38	19.9	24	14.6
Geosciences	1	0.6	10	4.6	3	1.6	7	4.3
Life Sciences	63	37.5	85	38.8	58	30.4	44	26.8
Math and Computer Sciences	8	4.8	2	0.9	0	0.0	3	1.8
Physical Sciences	68	40.5	78	35.6	80	41.9	74	45.1
Psychology	0	0.0	3	1.4	2	1.0	10	6.1
Social Sciences	0	0.0	2	0.9	10	5.2	2	1.2
Total Doctorates	168	100	219	100	191	100	164	100

Source: National Science Foundation

Office of Institutional Research